

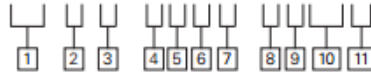
Vane pump - single

Balanced vane type

V10 – V20



F3 - V 10 - 1 P 5 S - 1 C 20 L



1 Special Seals

Omit if not required.

2 Vane pump

3 Series

10 or 20

4 Mounting

1 – 2-bolt flange, 3.25" pilot (standard)
6 – 2-bolt flange, 4.00" pilot (optional)

5 Inlet port connections

P – 1" NPT thread (V10 only)
1 1/4" NPT thread (V20 only)
S – 1.3125-12 straight thread (V10 only)
1.625-12 straight thread (V20 only)

6 Ring size

(Delivery at 1200 r/min and 100 psi/7 bar)

1 – 1 USgpm/3.8 L/min
2 – 2 USgpm/7.6 L/min
3 – 3 USgpm/11.4 L/min
4 – 4 USgpm/15.1 L/min
5 – 5 USgpm/18.9 L/min
6 – 6 USgpm/22.7 L/min
7 – 7 USgpm/26.5 L/min

V10 series

6 – 6 USgpm/22.7 L/min
7 – 7 USgpm/26.5 L/min
8 – 8 USgpm/30.3 L/min
9 – 9 USgpm/34.1 L/min
11 – 11 USgpm/41.6 L/min
12 – 12 USgpm/45.4 L/min
13 – 13 USgpm/49.2 L/min

V20 series

7 Outlet port connections

P – 1/2" NPT thd. (V10 only)
R – 1.1875–12 St. thd. (V20 only)
S – .750–16 St. thd. (V10 only)
1.0625–12 St. thd. (V20 only)

8 Shafts

1 – Straight keyed
11 – Splined
38 – 11 Tooth – 3/4" OD.
62 – Splined (V20 only)

9 Position of outlet port

(Viewed from cover end of pump)

A – Opposite inlet port
B – 90 CCW from inlet
C – In line with inlet
D – 90 CW from inlet

10 Design

11 – V20 series
20 – V10 series
Subject to change.

11 Shaft rotation

(Viewed from shaft end of pump)

L – Left hand (counterclockwise).
Omit for right hand.

Specifications

Based on using petroleum oil at 49° C (120° F), viscosity 32 cSt at 38° C (150 SUS at 100° F), and 0 psi inlet pressure

| Model series | Ring size | Displ. | Max. Speed | Maximum pressure | Typical delivery | Typical input power | Weight |
|--------------|---|---|------------|------------------|---------------------------------------|---------------------------------|-----------|
| | (Delivery USgpm @ 1200 r/min & 100 psi) | cm ³ /r (in ³ /r) | r/min | bar (psi) | L/min (USgpm) @ max. speed & pressure | kW (hp) @ max. speed & pressure | kg (lb) |
| V10 | 1 | 3,3 (.20) | 4800 | 172 (2500) | 13,6 (3.6) | 5,2 (7) | |
| | 2 | 6,6 (.40) | 4500 | 172 (2500) | 27,6 (7.3) | 10,1 (13.6) | |
| | 3 | 9,8 (.60) | 4000 | 172 (2500) | 35,6 (9.4) | 13,3 (17.8) | 4,5 - 6,8 |
| | 4 | 13,1 (.80) | 3400 | 172 (2500) | 41,3 (10.9) | 15,2 (20.4) | (10 - 15) |
| | 5 | 16,4 (1.00) | 3200 | 172 (2500) | 48,5 (12.8) | 17 (22.8) | |
| | 6 | 19,5 (1.19) | 3000 | 152 (2200) | 55,3 (14.6) | 18,3 (24.5) | |
| | 7 | 22,8 (1.39) | 2800 | 138 (2000) | 60,6 (16) | 17,9 (24) | |
| V20 | 6 | 19,5 (1.19) | 3400 | 172 (2500) | 60,9 (16.1) | 21,6 (29) | |
| | 7 | 22,8 (1.39) | 3000 | 172 (2500) | 63,2 (16.7) | 22 (29.5) | |
| | 8 | 26,5 (1.62) | 2800 | 172 (2500) | 67 (17.7) | 24,2 (32.5) | 7,3 - 8,2 |
| | 9 | 29,7 (1.81) | 2800 | 172 (2500) | 75 (19.8) | 26,5 (35.5) | (16 - 18) |
| | 11 | 36,4 (2.22) | 2500 | 172 (2500) | 86,7 (22.9) | 28 (37.5) | |
| | 12 | 39 (2.38) | 2400 | 152 (2200) | 87,1 (23) | 26,8 (36) | |
| | 13 | 42,4 (2.59) | 2400 | 152 (2200) | 98 (25.9) | 29,1 (39) | |

Vane pump - single

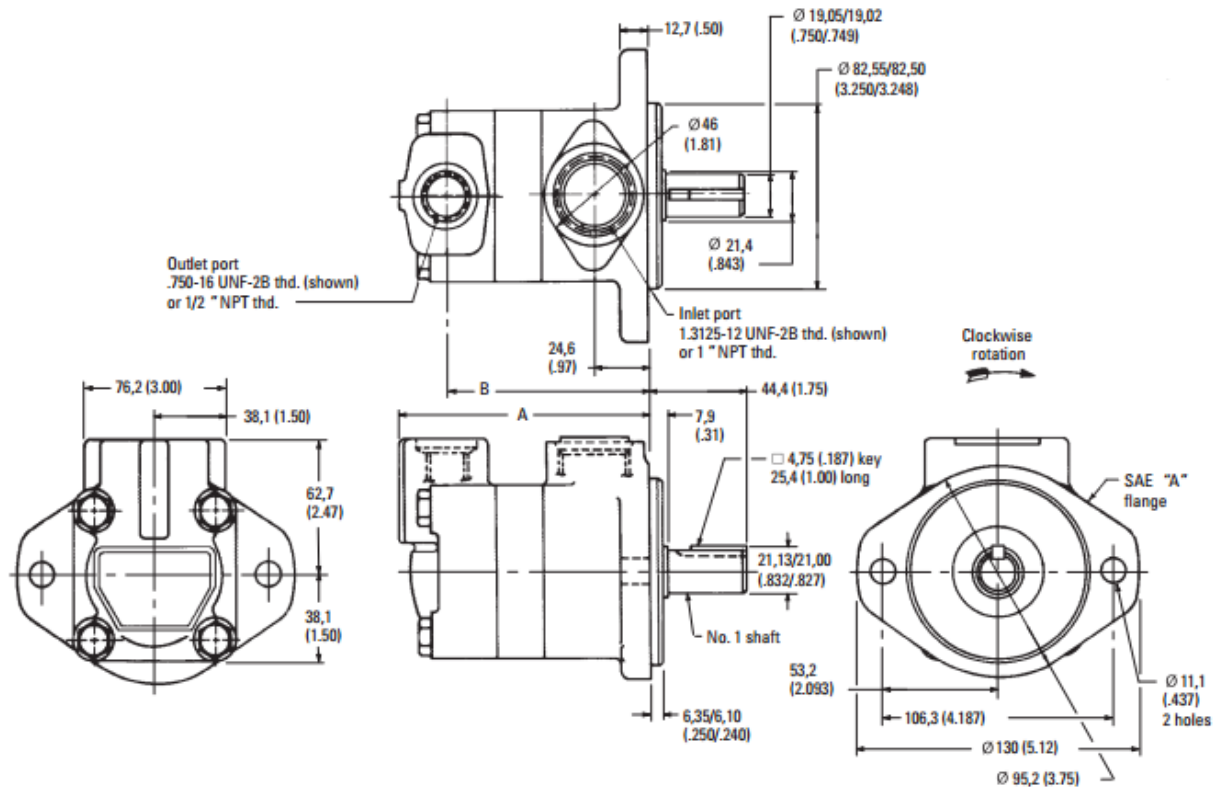
Balanced vane type

V10 – V20

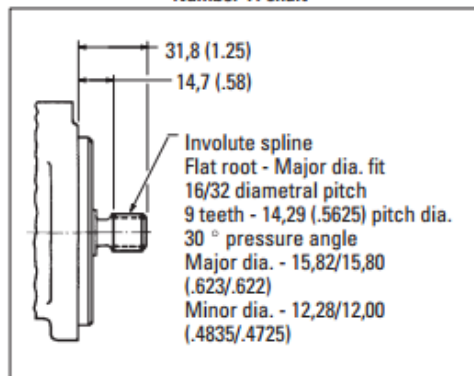


V10 Dimensions

Millimeters (inches)



Number 11 shaft



| Ring size | Dimension | |
|-----------|--------------|--------------|
| | A | B |
| 1 | 115,6 (4.55) | 91,9 (3.62) |
| 2 | 115,6 (4.55) | 91,9 (3.62) |
| 3 | 115,6 (4.55) | 91,9 (3.62) |
| 4 | 121,9 (4.80) | 98,3 (3.87) |
| 5 | 121,9 (4.80) | 98,3 (3.87) |
| 6 | 127,0 (5.00) | 103,4 (4.07) |
| 7 | 127,0 (5.00) | 103,4 (4.07) |

Vane pump - single

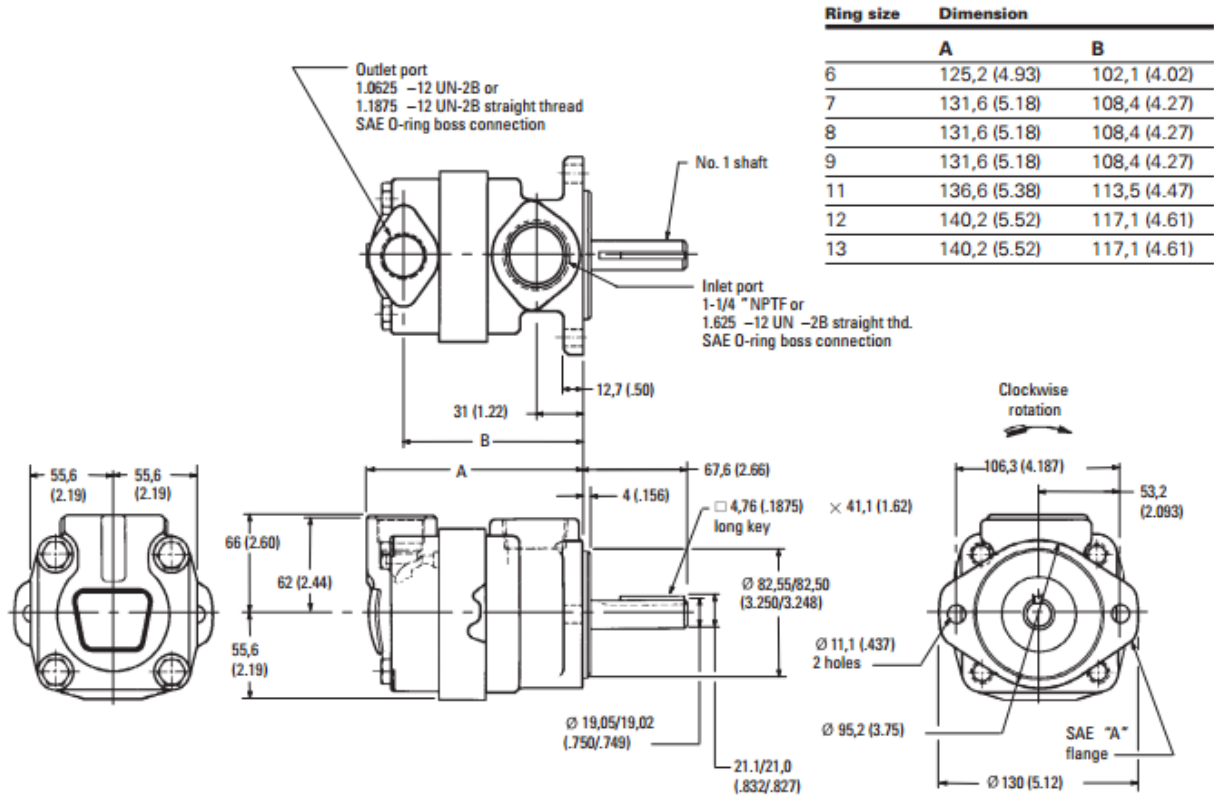
Balanced vane type

V10 – V20

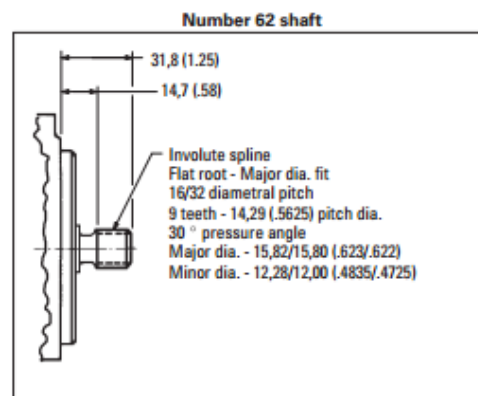
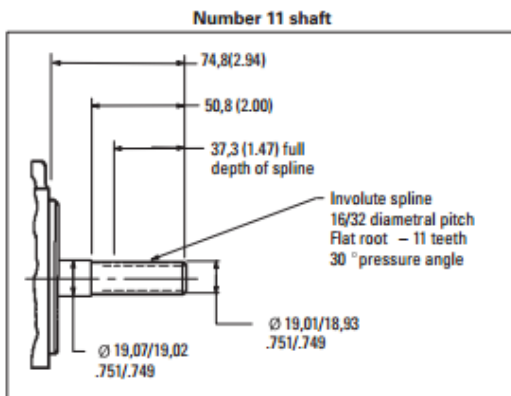


V20 Dimensions

Millimeters (inches)



| Ring size | Dimension | |
|-----------|--------------|--------------|
| | A | B |
| 6 | 125,2 (4.93) | 102,1 (4.02) |
| 7 | 131,6 (5.18) | 108,4 (4.27) |
| 8 | 131,6 (5.18) | 108,4 (4.27) |
| 9 | 131,6 (5.18) | 108,4 (4.27) |
| 11 | 136,6 (5.38) | 113,5 (4.47) |
| 12 | 140,2 (5.52) | 117,1 (4.61) |
| 13 | 140,2 (5.52) | 117,1 (4.61) |



Vane pump - single

Balanced vane type

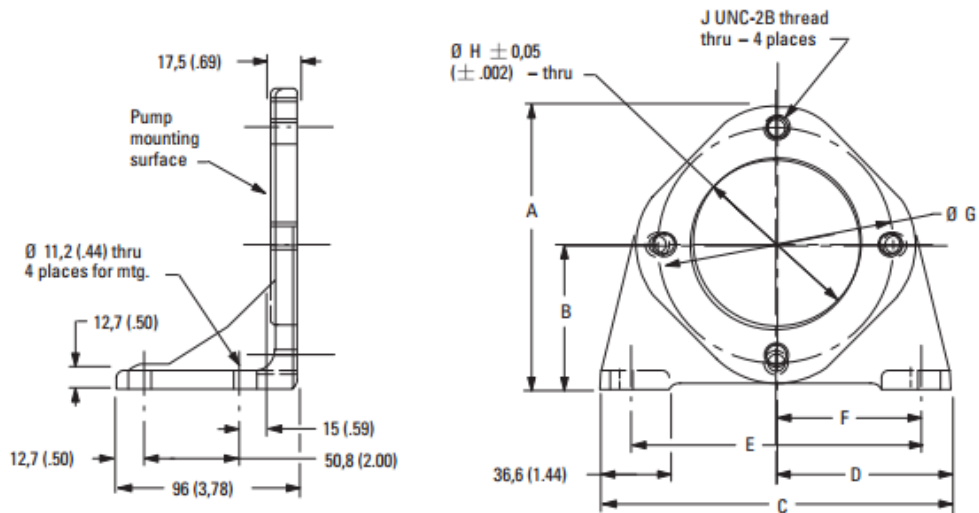
V10 – V20



FOOT MOUNTING DIMENSIONS

Dimensions

Millimeters (inches)



Note: Each kit includes screws for mounting pump to bracket.

| Model | A | B | C | D | E | F | øG | øH | J |
|---------|--------------|-------------|--------------|-------------|--------------|-------------|----------------|----------------|---------|
| FB-A-10 | 134,9 (5.31) | 69,8 (2.75) | 152,4 (6.00) | 76,2 (3.00) | 127,0 (5.00) | 63,5 (2.50) | 106,37 (4.188) | 82,63 (3.253) | .375-16 |
| FB-B-10 | 180,8 (7.12) | 92,2 (3.63) | 171,4 (6.75) | 85,7 (3.38) | 146,0 (5.75) | 73,1 (2.88) | 146,0 (5.75) | 101,68 (4.003) | .500-13 |