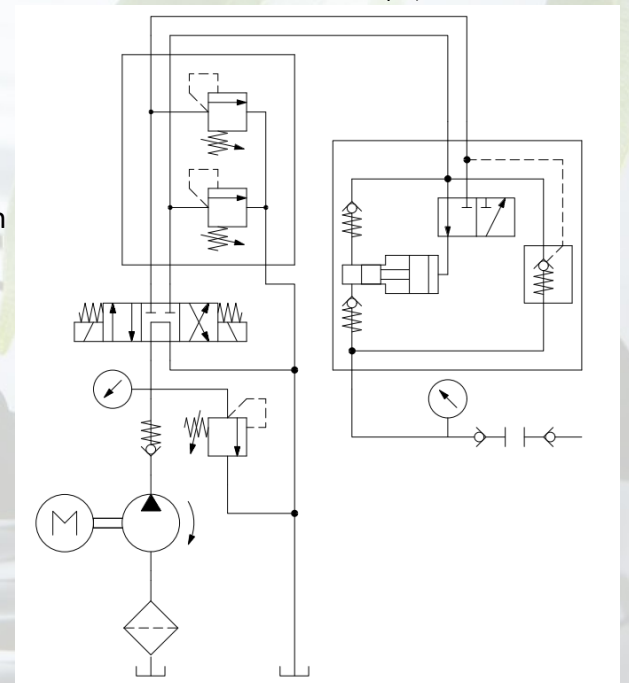
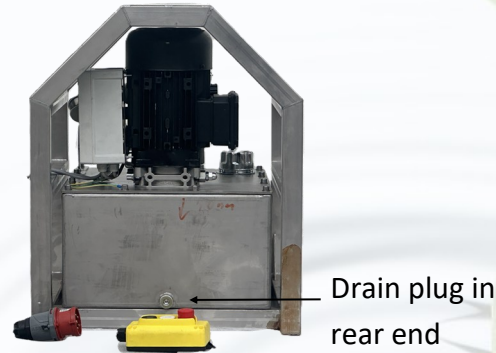
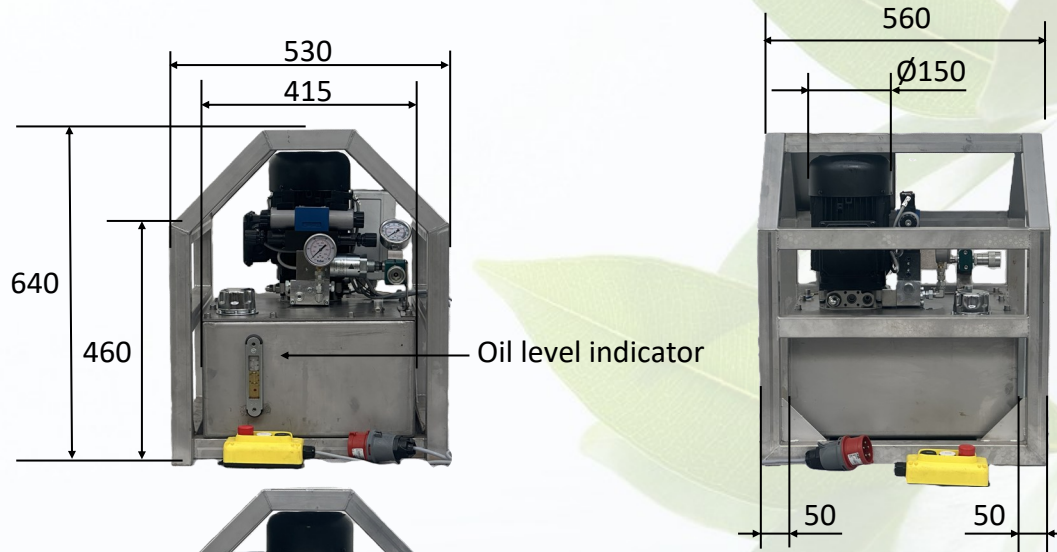
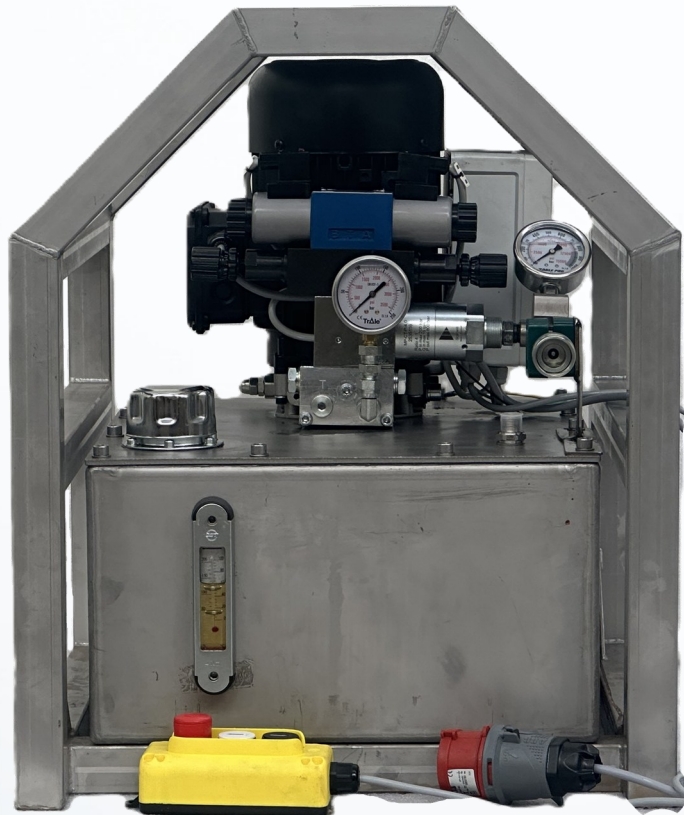


HPU-35 Hydraulic Power Unit



ELECTRIC MOTOR

Power: 1,5 kW
Voltage: 220 V AC
1-phase

PUMP & OIL TANK

Pump displacement: 2,1 cc/rev
Tank Capacity: 40 liter square tank

MAX. PRESSURE

P: 700 bar

Hydraulic Circuit

ISO 14540 quick-coupler

FLOW

0,75 L/min



TAON Hydraulic Components ApS are specialists in hydraulic solutions, components and tool.

TAON Hydraulic Components ApS • +45 24 48 84 80 • info@taon.dk • www.taon.dk

© TAON Hydraulic will always help you find the best solution.