

# Solenoid Valves

Electrical operated directional control valve

NG06 (cetop 3)



## CHARACTERISTICS FEATURES

A solenoid valve is a control unit which, either shuts off or allow fluid flow when electrically energized or de-energized.

- Size 6
- Porting pattern according to ISO 4401-03-02-0-05
- Working voltage possible 12V / 24V DC and 220 V/50 Hz AC, each valve 30 W
- Manual override

Max. flow [L/min]	Max. pressure [bar]	
	(P,A,B)	(T)
80	350	100

TAON Hydraulic Components ApS are specialists in hydraulic solutions, components and tools.

• +45 24 48 84 80 • [info@taon.dk](mailto:info@taon.dk) • [www.taon-hydraulic.com](http://www.taon-hydraulic.com)

© TAON Hydraulic will always help you find the best solution.

# Solenoid Valves

Electrical operated directional control valve

NG06 (cetop 3)

## Ordering details

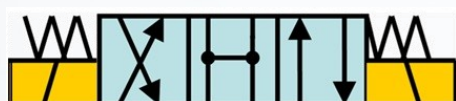
NG	06	01	12V
----	----	----	-----

Nominal size (eg. 06, 10)

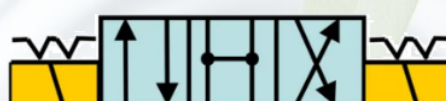
Hydraulic symbol (eg. 00, 01, 02, 04)

Method of energizing  
(eg. 12 V DC, 24 V DC,  
230 V AC 50/60 Hz)  
07 = manual

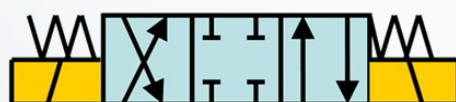
## Symbols



=00



=00-L



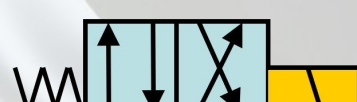
=01



=10



=02



=12



=04



=14

**TAON**

Hydraulik Komponenter

TAON Hydraulic Components ApS are specialists in hydraulic solutions, components and tools.

• +45 24 48 84 80 • [info@taon.dk](mailto:info@taon.dk) • [www.taon-hydraulic.com](http://www.taon-hydraulic.com)

© TAON Hydraulic will always help you find the best solution.

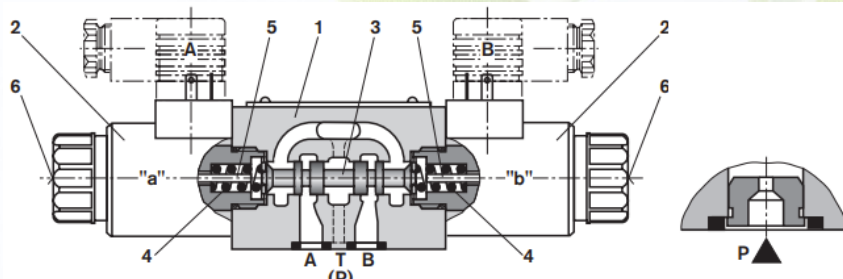
# Solenoid Valves

Electrical operated directional control valve

NG06 (cetop 3)

## Function

Type NG directional valves are solenoid operated directional spool valves. They control the start, stop and direction of flow. The directional control valves consist of housing (1), one or two solenoids (2), control spool (3), and one or two return springs (4).



In the de-energised condition the control spool (3) is held in the neutral or initial position by means of return springs (4) (except for impulse spools). The control spool (3) is operated via wet pin solenoids (2). To guarantee satisfactory operation care should be taken to ensure that the solenoid pressure chamber is filled with oil. The force of the solenoids (2) acts via the plunger (5) on the control spool (3) and pushes this from its neutral position into the required end position. This permits flow from either:  $P \rightarrow A$  and  $B \rightarrow T$ , or  $P \rightarrow B$  and  $A \rightarrow T$ . When solenoid (2) is de-energised, the control spool (3) is returned to its neutral position by means of the return springs (4). A hand override (6), allows movement of the control spool (3) without energising the solenoid.

Type NG0600-L has two switched positions, two solenoids and a detent. In this way both positions are switched alternately and there is no need to continually energise the solenoid. Note: Pressure peaks in the tank line to two or more valves can, with valves with detents, lead to unintended spool movements! It is therefore, recommended that a separate tank line is used or that a check valve is fitted into the tank line.

## Technical Data

Ambient temperature	°C (F°)	-30 to +50 NBR seals	
Ports A, B, P	bar	350	
Max flow	L/min	80	
Available voltages	Current	DC	AC 50/60 Hz
	V	12, 24	230

**TAON**

Hydraulik Komponenter

TAON Hydraulic Components ApS are specialists in hydraulic solutions, components and tools.

• +45 24 48 84 80 • [info@taon.dk](mailto:info@taon.dk) • [www.taon-hydraulic.com](http://www.taon-hydraulic.com)

© TAON Hydraulic will always help you find the best solution.



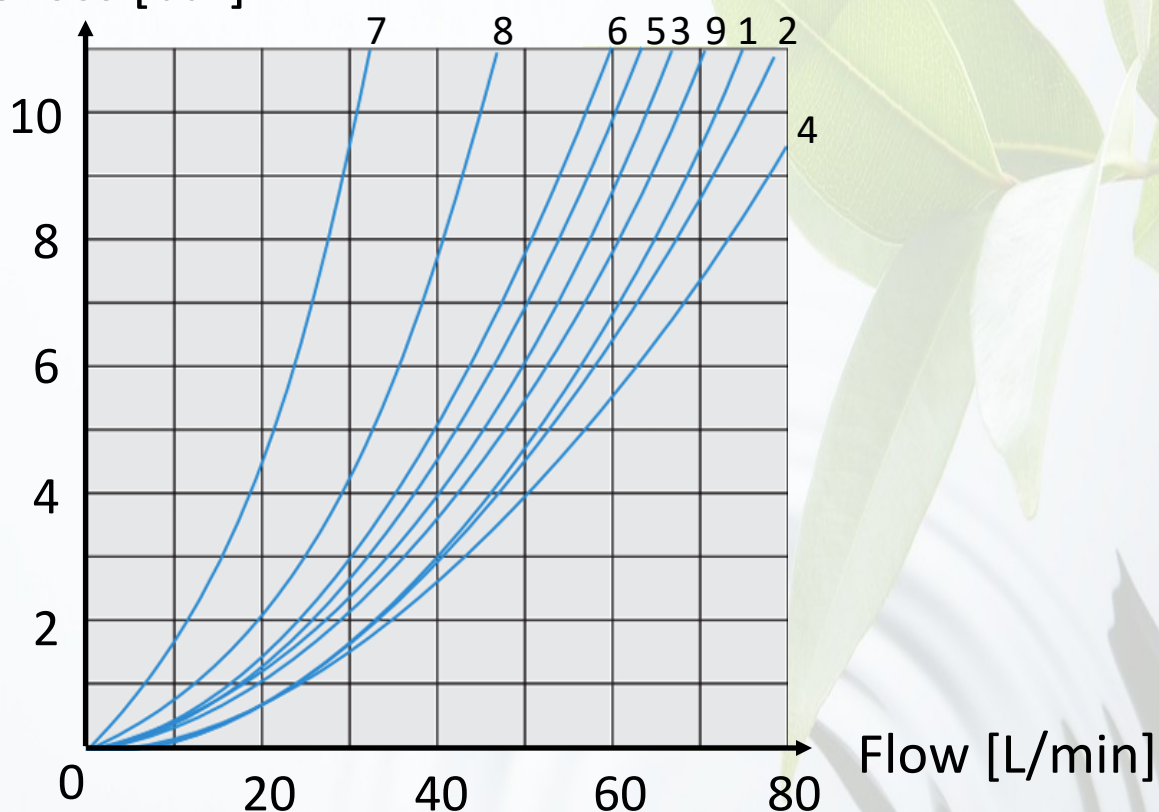
# Solenoid Valves

Electrical operated directional control valve

NG06 (cetop 3)

## Characteristic Curves

Pressure loss [bar]



Function	Curve on the diagram			
	P to A	P to B	A to T	B to T
00	2	4	2	2
01	3	3	1	1
02	6	6	9	9
04	1	1	2	1
10	5	5	3	3
12	5	5	3	3
14	6	6	9	9

# Solenoid Valves

Electrical operated directional control valve

NG06 (cetop 3)

## Unit Dimensions

