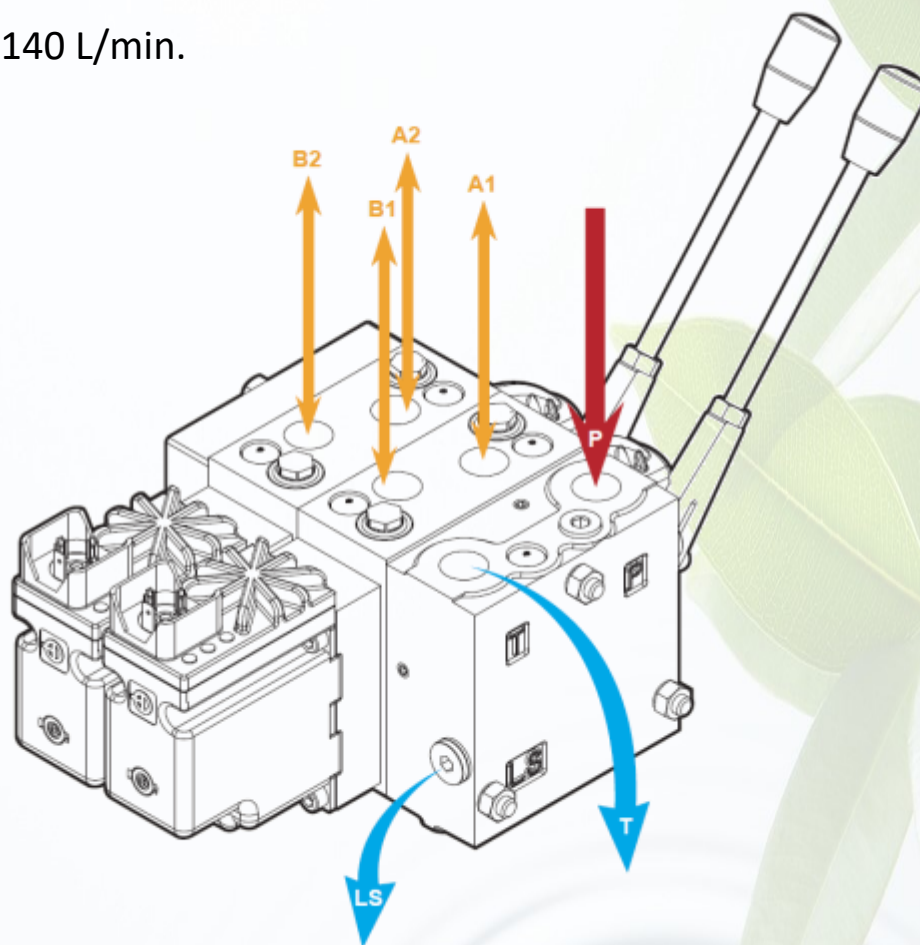


# Proportional valve

1-10 sections, 140 L/min.

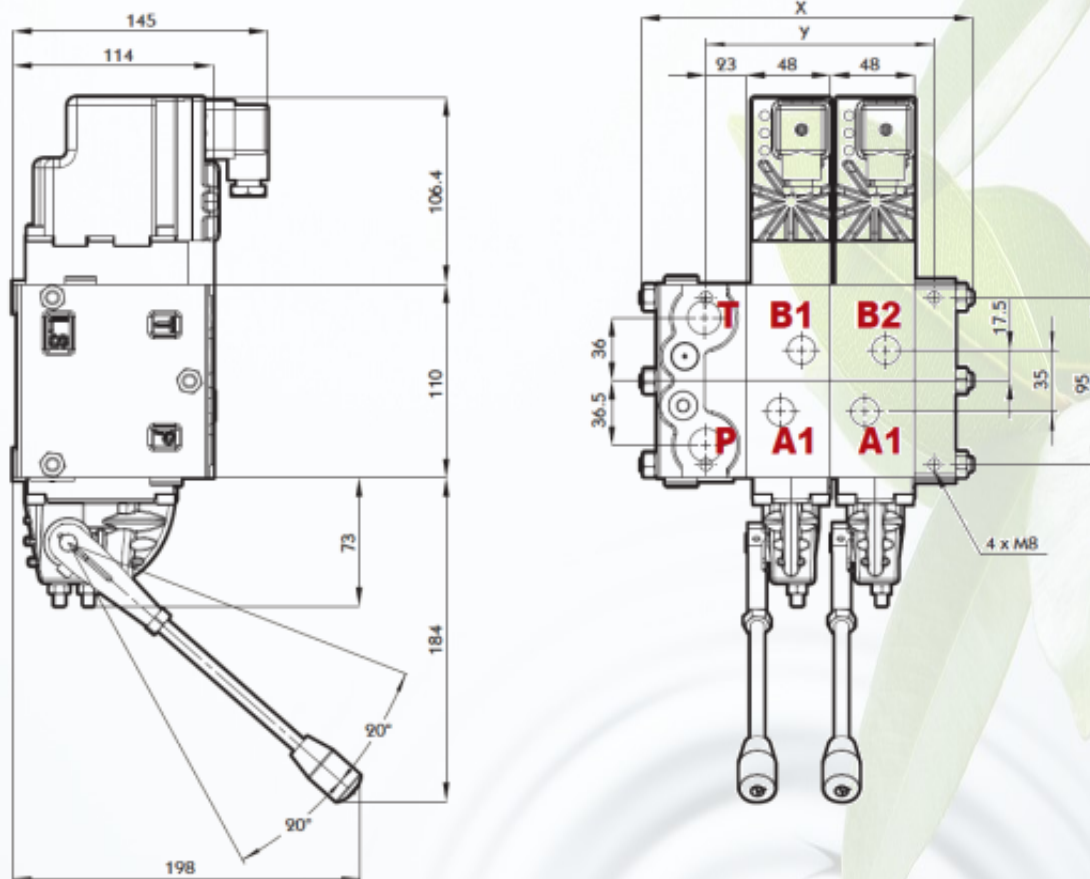
PV-140



Proportional valve data		
Max. pressure	P	350 bar
	A/B	350 bar
	T	40 bar
Oil flow rated	P	140 L/min.
Oil temperature (inlet temperature)		From -20°C to 90°C
Oil viscosity	Operating range	From 15 to 75 mm <sup>2</sup> /s
	Min.	12mm <sup>2</sup> /s
	Max.	4 mm <sup>2</sup> /s
Ambient temperature		From -30°C to 60°C
Connections	P/T	G 3/4
	A/B	G 1/2
Sections		1-10

# Proportional valve

1-10 sections, 140 L/min.



Model	Dimensions (mm)	
	X	Y
PV-140/1	140	82
PV-140/2	189	130
PV-140/3	238	178
PV-140/4	287	226
PV-140/5	336	274
PV-140/6	385	322
PV-140/7	434	370
PV-140/8	483	418
PV-140/9	527	466
PV-140/10	576	514



TAON Hydraulic Components ApS are specialists in hydraulic solutions, components and tool.

TAON Hydraulic Components ApS • +45 24 48 84 80 • info@taon.dk • www.taon.dk

© TAON Hydraulic will always help you find the best solution.

# Proportional valve

1-10 sections, 140 L/min.

PV-140

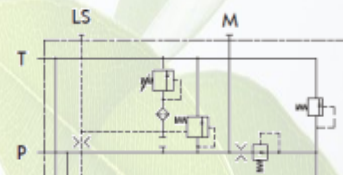
## PUMP-SIDE MODULE OPTIONS

### PV140P0102

Open centre pumpside module for pumps with fixed displacement

PV140P0102-G6

P port: G 3/4

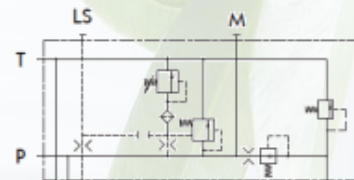


### PV140P0202

Closed centre pumpside module for pumps with variable displacement

PV140P0202-G6

P port: G 3/4



## BASIC MODULE OPTIONS

### PV140V04

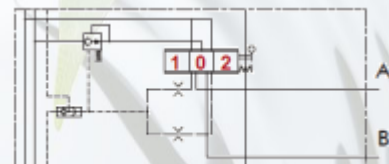
With non-damped pressure-compensated valve

PV140V04-G4

AB port: G 1/2

PV140V04-E10

AB port: 7/8-14UNF



### PV140V06

Adjustable LS A/B pressure-relief valve.

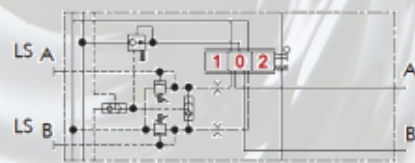
PV140V06-G4

AB port: G 1/2

With non-damped pressure-compensated valve

PV140V06-E10

AB port: 7/8-14UNF



# Proportional valve

1-10 sections, 140 L/min.

PV-140

## FLOW-CONTROL SPOOLS

### Double spool

<p>1 0 2 B A T P T</p>	<p>1 0 2 B A T P T</p>	<p>1 0 2 B A T P T</p>
<p>P → B A → T</p>	<p>P &amp; T &amp; A &amp; B closed</p>	<p>P → A B → T</p>

Flow (L/min.)	5	10	25	40	65	100	130
---------------	---	----	----	----	----	-----	-----

### Motor spool

<p>1 0 2 B A T P T</p>	<p>1 0 2 B A T P T</p>	<p>1 0 2 B A T P T</p>
<p>P → B A → T</p>	<p>A &amp; B → T P closed</p>	<p>P → A B → T</p>

Flow (L/min.)	5	10	25	40	65	100	130
---------------	---	----	----	----	----	-----	-----

### Single spool

<p>1 0 2 B A T P T</p>	<p>1 0 2 B A T P T</p>	<p>1 0 2 B A T P T</p>
<p>P → B</p>	<p>P &amp; T &amp; A &amp; B closed</p>	<p>B → T</p>

Flow (L/min.)	10	25	40	65	100
---------------	----	----	----	----	-----

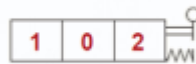
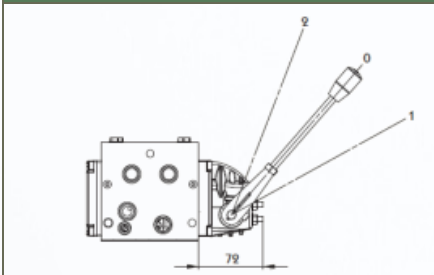
# Proportional valve

1-10 sections, 140 L/min.

PV-140

## LEVER

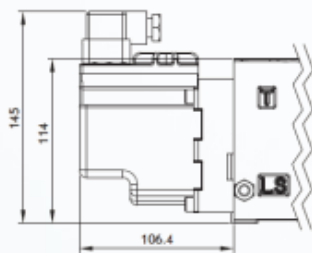
### Type LM



Standard lever, spring centered; Individual oil-flow adjustment to ports A and B

## ELECTRIC-CONTROL OPTIONS

### Type EPVO



#### Funktion:

The main spool is controlled by ON/OFF activated actuator. Reaction time from neutral position to max. Spool travel

#### Characteristics:

Supply voltage range: 11V~30V, LED light sign can be chosen

Code	Description	Enclosure to IGC 529	
EPVO-H0101	ON/OFF activated actuator connectors, with LED lights	Hirschmann connectors	IP 65

Hirschmann connectors	Circuit symbol	Function																
<table border="1"> <thead> <tr> <th>ON/OFF</th> <th>A (Pin 1)</th> <th>B (Pin 2)</th> <th>LED light sign</th> </tr> </thead> <tbody> <tr> <td>Neutral position 0</td> <td>0</td> <td>0</td> <td>0</td> </tr> <tr> <td>P → A</td> <td>UDC</td> <td>0</td> <td>BLUE</td> </tr> <tr> <td>P → B</td> <td>0</td> <td>UDC</td> <td>YELLOW</td> </tr> </tbody> </table>	ON/OFF	A (Pin 1)	B (Pin 2)	LED light sign	Neutral position 0	0	0	0	P → A	UDC	0	BLUE	P → B	0	UDC	YELLOW		
ON/OFF	A (Pin 1)	B (Pin 2)	LED light sign															
Neutral position 0	0	0	0															
P → A	UDC	0	BLUE															
P → B	0	UDC	YELLOW															

# Proportional valve

1-10 sections, 140 L/min.

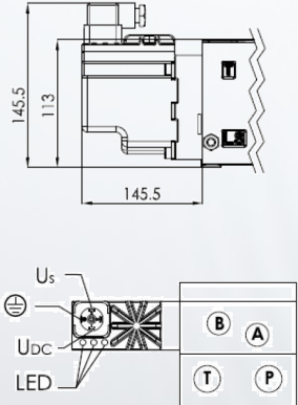

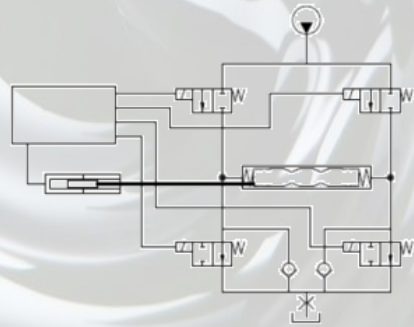
PV-140

## TYPE EPVM

Code	Specification
EPVM-H0110	Proportional Solenoid Valve, Hirschmann connectors, 12VDC, without LED
EPVM-H0111	Proportional Solenoid Valve, Hirschmann connectors, 12VDC, with LED
EPVM-H0120	Proportional Solenoid Valve, Hirschmann connectors, 24VDC, without LED
EPVM-H0121	Proportional Solenoid Valve, Hirschmann connectors, 24VDC, with LED

<b>Supply voltage</b>	Rate	12V DC	24V DC
	Range	11V~15V	22V~30V
	Max. Ripple	5%	
<b>Current consumption</b>	Typical	760mA	670mA
<b>Signal voltage (Us)</b>	Neutral	0.5*Udc	
	A port↔B port	0.25~0.75*Udc	
<b>LED</b>	A port	Blue	
	Neutral (power)	Green	
	B port	Yellow	

<b>Ambient temperature</b>	-30°C~+60°C
<b>Oil temperature</b>	-30°C~+90°C
<b>Pilot pressure</b>	10~15 bar
<b>Grade of enclosure</b>	Hirschmann: IP65

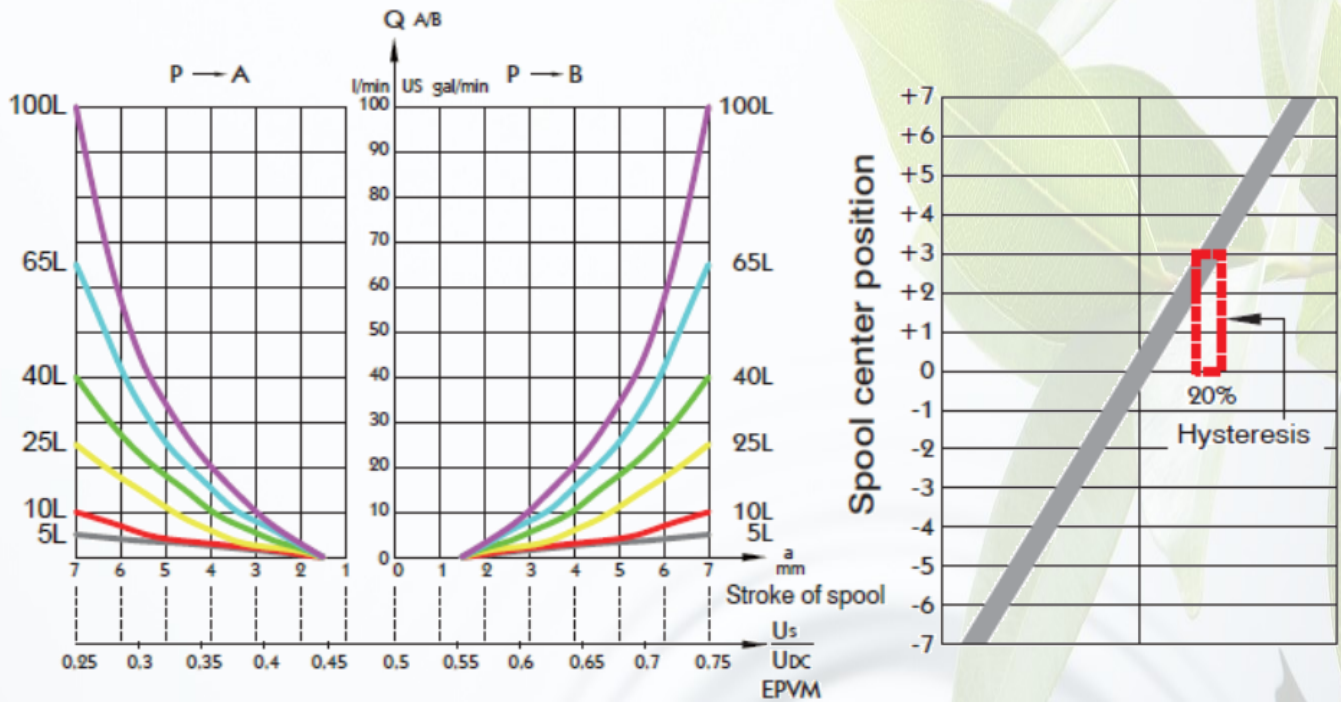
Appearance size	Circuit symbol	Function
		

# Proportional valve

1-10 sections, 140 L/min.

PV-140

## GRAPHS OF CONTROL



# Proportional valve

1-10 sections, 140 L/min.

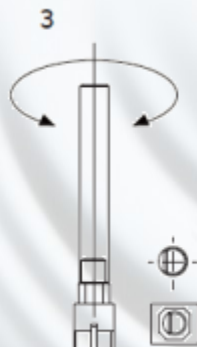
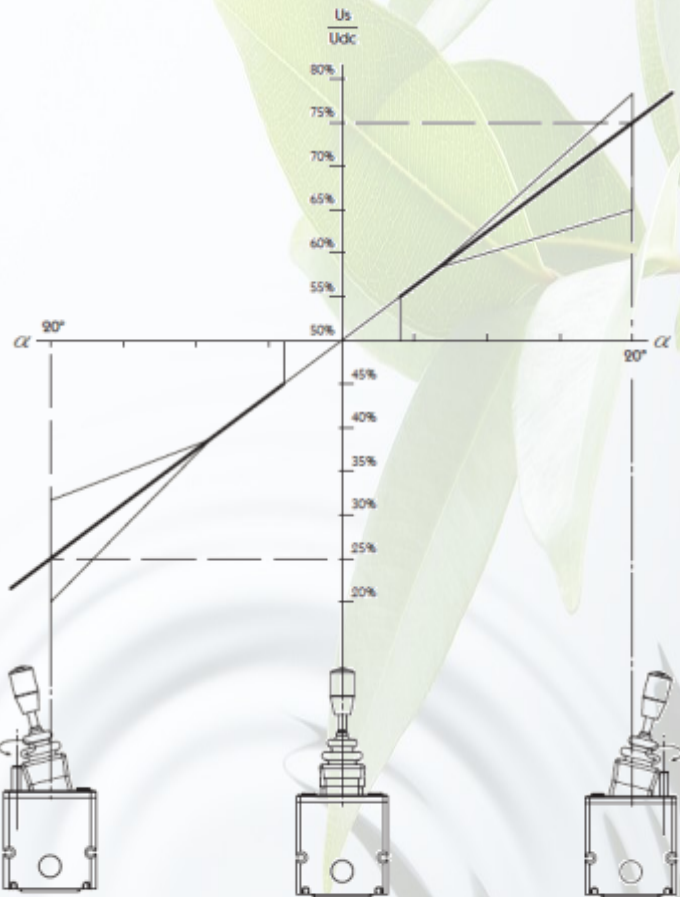
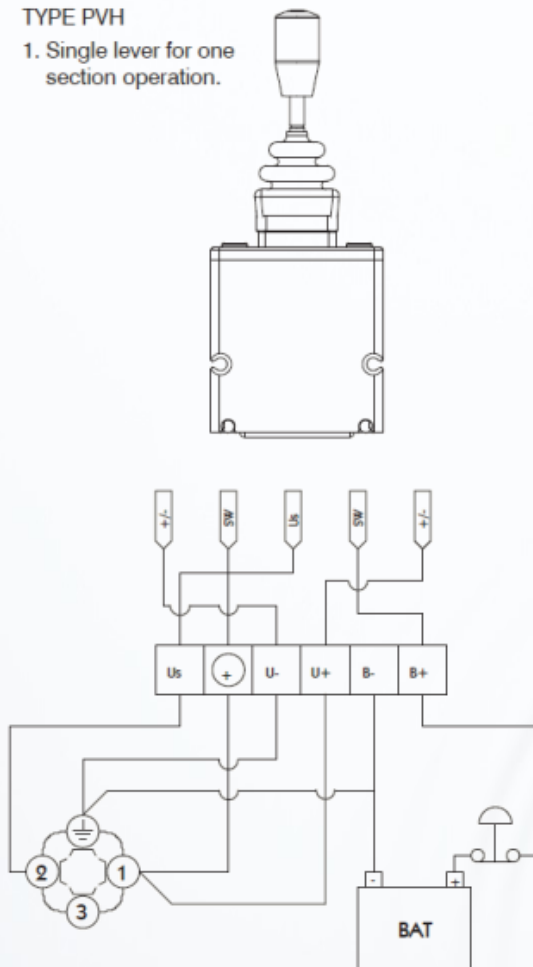
PV-140

## PVH PROPORTIONAL LEVER

### PVH-1

TYPE PVH

1. Single lever for one section operation.



Note: Please make sure by traverse operating when adjusting.